



# The Grapevine



## *Arrows and Opportunity*

**Reverend Edward Dunn**

English theologian N.T. Wright tells the story of a king who commanded his archers to shoot at the sun. The strongest bowmen, using the finest equipment, tried all day; but their arrow fell short, and the sun continued unaffected on its course. At night the archers polished and re-feathered their arrows, and the next day they tried again, but their efforts were in vain. The king became angry.

On the third day, a young archer, with the smallest of bows, came at noon to where the king sat before a pond in his garden. There was the sun, a golden ball reflected in the still waters. With a single shot the young bowman pierced it at its heart. The sun splintered into a thousand glittering fragments.

The point of the story is that “all the arrows of history cannot reach God.”

April begins a month of Easter Sundays with the news of Jesus’ resurrection shared by the women, the dispelling of fear and doubt when Jesus appears to the disciples, particularly in his appearance to Thomas. It is a month in which we will read the story of two distraught followers on a journey home to Emmaus who encounter a stranger whom they recognize as their risen Lord in the breaking of bread. What we will hear in scripture on each of these Sundays is the testimony of those who witnessed them.

We, on the other hand, might be compared to the archers in Wright's story, shooting our arrows into the sky but never striking our target. What we have is the story they tell – a story that we hear and take by faith. We get to watch as the reflection in the pond is shattered – as we discover its meaning for today. The sun's reflection will be present again tomorrow, giving another opportunity to watch and learn from the shattered reflection once more.

Don't let this month pass by without taking time to hear these perennial stories of faith as they are shaped and reshaped by our present contexts. You are invited to join us Sundays at 10a.m. to learn and grow in faith.

**Blessings,  
Edward**

## *Join Us this Lenten Season!*

Come walk with us through Lent, Holy Week, and Easter — all are welcome to worship, learn, and celebrate together.

### **HOLY WEEK EVENTS:**

- **Maundy Thursday Dinner & Service – April 2 | 6:00PM**

## **EASTER SUNDAY SERVICE**



### *Sunrise Service*

**7:00AM @ The Palma Sola Botanical Gardens**

### *Easter Sunday Service*

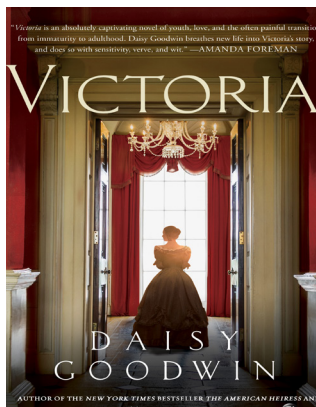
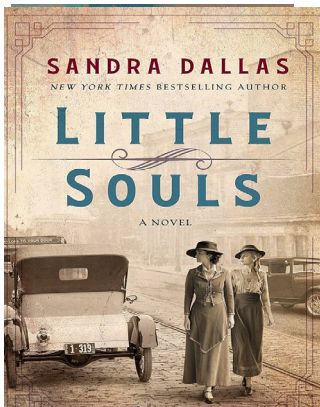
**10:00AM in the Sanctuary**

# March Session Highlights

- Approved the Pastor's absence during May 14th through May 24th to attend to studies at Duke.
- Endorsed changing the March Outreach Offering go to Day4Hope. The One Great Hour of Sharing collection will be taken in April, and the May Outreach Offering will be for Meals on Wheels.
- Approved having the Manatee Learning Academy use the Sanctuary on the morning of Saturday, June 6th for their Kindergarten Graduation Ceremony.



## United Book Club



**APR 13 | 1 - 2:30PM MAY 11 | 1 - 2:30PM**

Join in any second Monday at 1pm in the Media Center & Zoom for fun conversation.

### 2026 READING LIST

For more information, call Vicki Schooley at (941) 518-2315.

## Men's Group



### **MEN'S GROUP**

You're invited to attend the Morning Men's Group. Get to know the men you see in church. Share your story. Enjoy fellowship.

### **MEETINGS START AT 8:30A**

**APR 2** - Fellowship and breakfast | Poppi's Place restaurant

**APR 16** - Fellowship & a discussion about Christian Living | Fellowship Hall

Please contact Ron Dickerson  
[rondickersonupc@gmail.com](mailto:rondickersonupc@gmail.com)

# Outreach Update & Opportunities

Welcome spring and the celebration of Easter. As we recognize renewal of our faith, may we also put into action what Jesus' example shows us "To love one another, as He so loved the world." (not sure that is a direct quote, but you get the message). One of the ways we can do that is through Outreach to your community and beyond.

## March Outreach Highlights:

- You donated to the **Day4Hope event** to support eligible students from Palma Sola Elementary School to participate in the annual Day4Hope program, July 25th at Kirkwood Presbyterian, providing homeless and disadvantaged children with back-to-school supplies and services to begin school on an equal playing field.
- You donated eyeglasses to **Project Light**, an English education program for adult speakers of other languages.
- A **St. Patrick's Day Party** was held at Brookdale Senior Living Center on March 17th as part of our Older Adult Ministry.
- Volunteers served faithfully every Friday at **Our Daily Bread**.
- Several people enjoyed a visit to the new **Mote Marine** on March 12th.
- Men's underwear for **Turning Points** was purchased with funds from the Outreach budget.
- **100 peanut butter and jelly sandwiches** were made each week for the clients of Our Daily Bread.
- **The Blessing Box** was replenished each week for individuals in need in our community.
- The Dreyer Trust distributions as of **March 1** are **\$7,692**.

## April Outreach Opportunities:

- April **DOES IT** project is collecting baby wipes for the clients of **Our Daily Bread**. Funds from our Outreach budget will be used to purchase diapers.
- **The Giving Challenge** is from noon **April 15** until noon **April 16th**. This is an opportunity to have donations matched, up to \$100, for **A Day4 Hope**. Click on this link during that time period if you wish to donate:



[www.thegivingpartner.org/p2p/643909/donna-lesch](http://www.thegivingpartner.org/p2p/643909/donna-lesch)

# Outreach Opportunities & Offering

## The Pen Pal Party - Thursday | April 9 | 9:45A

Please sign up in the Narthex to let us know if you are coming.  
Arrive at the school at 9:30 to sign in. The program will begin at 9:45.

### Ongoing Opportunities:

- Servers for **Our Daily Bread on Fridays** are always needed. Contact Dorothy Simes if you would like to volunteer.
- We continue to collect non-perishable food items in the cart in the Narthex to donate to **Our Daily Bread of Bradenton**. They are always in need of shelf stable items to stock the Loaves & Fishes food pantry.
- Please keep in mind our **Blessing Box** by the east parking lot. The Blessing Box serves as a mini food pantry for our local neighborhood, and you are welcome to add to it or take from it as needed.
- Contributions of loose change, soft money, and checks for **FELT (Feeding Empty Little Tummys)** are always welcome. To donate, use the envelopes in the pews or mail a check to the church office with “FELT” in the memo line.
- Join your church family in Fellowship Hall after worship each week to make **PB & J sandwiches** to share with the clients of Our Daily Bread. Thank you to all who have been bringing in supplies, making sandwiches, and helping SPREAD the love of Christ to your neighbors in need!

## April Outreach Offering

Our **Outreach Offering for April** will go to Presbyterian Mission Agency’s One Great Hour of Sharing. Proceeds support three PC(USA) programs providing people with safety, sustenance, and hope: Presbyterian Disaster Assistance, Presbyterian Hunger Program, and Self-Development of People.

You may donate to “One Great Hour of Sharing”:

- *during the worship service, in your offering envelope,*
- *by mailing a check to the church office with “OGHS” in the memo line, or*
- *or contribute through online giving*

# March at United - Photos



# April Birthdays & Anniversaries

|               |                             |               |   |
|---------------|-----------------------------|---------------|---|
| <b>APR 1</b>  | Andrea & Lee Harmon         | <b>APR 15</b> | Edith Onugha                              |
| <b>APR 4</b>  | Janice Jarrell              | <b>APR 18</b> | Janet DeGroff                             |
| <b>APR 5</b>  | Mark Wolf                   | <b>APR 20</b> | Bev Banks                                 |
| <b>APR 7</b>  | Carol MacFarlane            | <b>APR 21</b> | Toby Chinwuba, Alease Hamilton            |
| <b>APR 10</b> | Myrna Adams, Peter Sokolich | <b>APR 26</b> | Tim & Amy Pedon                           |
| <b>APR 12</b> | Marilyn George              | <b>APR 27</b> | Joan Carlson, Chris James<br>Robert Felix |



## **“The Present Word” - BIBLE STUDY**

We gather each Sunday morning at 8:45 a.m. for Bible Study using The Present Word curriculum from the Presbyterian Church (USA). New materials are provided each quarter, making it easy to join at any time — everyone is welcome!



**- United Presbyterian Church | April 2026 Newsletter -**

6510 3rd Ave W.  
Bradenton, FL 34209  
941-792-3141

Church Website: [upchurchbradenton.org](http://upchurchbradenton.org)

# April 2026

SUN MON TUE WED THU FRI SAT

|   |                      |                              |  |  |  |    |
|---|----------------------|------------------------------|--|--|--|----|
|   |                      |                              | 1<br>Bell Choir   6p<br>Chancel Choir   7p   | 2<br>MEN'S GROUP<br>8:30a   Poppi's<br>MAUNDY THURS<br>DINNER & SERVICE<br>6PM       | 3<br>GOOD FRIDAY<br>HOLY<br>STROLLERS   9a<br>Our Daily Bread<br>9:30a                   | 4  |
| 5<br>EASTER SUNDAY<br>Sunrise Easter<br>Service   7a<br>Sunday Service<br>Communion 10a<br>Fellowship   11a | 6                    | 7<br>Outreach / 3p           | 8<br>Bell Choir   6p<br>Chancel Choir   7p   | 9<br>Pen Pal Party<br>9:30am   | 10<br>HOLY<br>STROLLERS   9a<br>Our Daily Bread<br>9:30a                                 | 11 |
| 12<br>Present Word 8:45a<br>Worship Service<br>10a   Fellowship   | 13<br>Book Club / 1p | 14<br>PRAYER<br>GROUP   11A  | 15<br>The Giving<br>Challenge Starts<br>12p<br>Bell Choir   6p<br>Chancel Choir   7p | 16<br>MEN'S GROUP<br>8:30a<br>The Giving<br>Challenge Ends<br>12p<br>FINANCE - 3:30P | 17<br>HOLY<br>STROLLERS   9a<br>Our Daily Bread<br>9:30a                                 | 18 |
| 19<br>Present Word 8:45a<br>Worship Service<br>10a   Fellowship   | 20                   | 21<br>UPC SESSION<br>  3:15p | 22 ARBOR DAY<br>Bell Choir   6p<br>Chancel Choir   7p                                | 23   | 24<br>HOLY<br>STROLLERS   9a<br>Our Daily Bread<br>9:30a<br>GRAPEVINE INPUTS<br>DEADLINE | 25 |
| 26<br>Present Word 8:45a<br>Worship Service<br>10a   Fellowship   | 27 EARTH DAY         | 28<br>PRAYER<br>GROUP   11A  | 29<br>Bell Choir   6p<br>Chancel Choir   7p  | 30   |  |    |

## UPC - Resource Links

View the online church [Calendar](#) for latest information about Sunday worship services, Bible study, outreach and other events. Livestreamed and recorded worship services may be viewed at [Online Worship](#).